



THE UNIVERSITY OF
TENNESSEE
KNOXVILLE

Childcare Initiative

INFORMATIONAL CONFERENCE

May 30, 2024 @ 3 pm



BRAILSFORD & DUNLAVEY

Agenda

1. Introductions & Opening Remarks
2. Project Success Criteria
3. Partnership Opportunity
4. RFI Process and Key Dates
5. Q&A



University of Tennessee Knoxville

INTRODUCTIONS



Tennessee's **flagship university**



20% growth over the past five years



8,045 faculty and staff



Ranked a **top 50 public university** in the US



Contributes **\$1.7 billion annually** to Tennessee's economy



Project Success Criteria

KEY DRIVERS

Institutional Outcomes



Workforce Management



Campus Community



Financial Performance



UTK's Childcare Center Should . . .

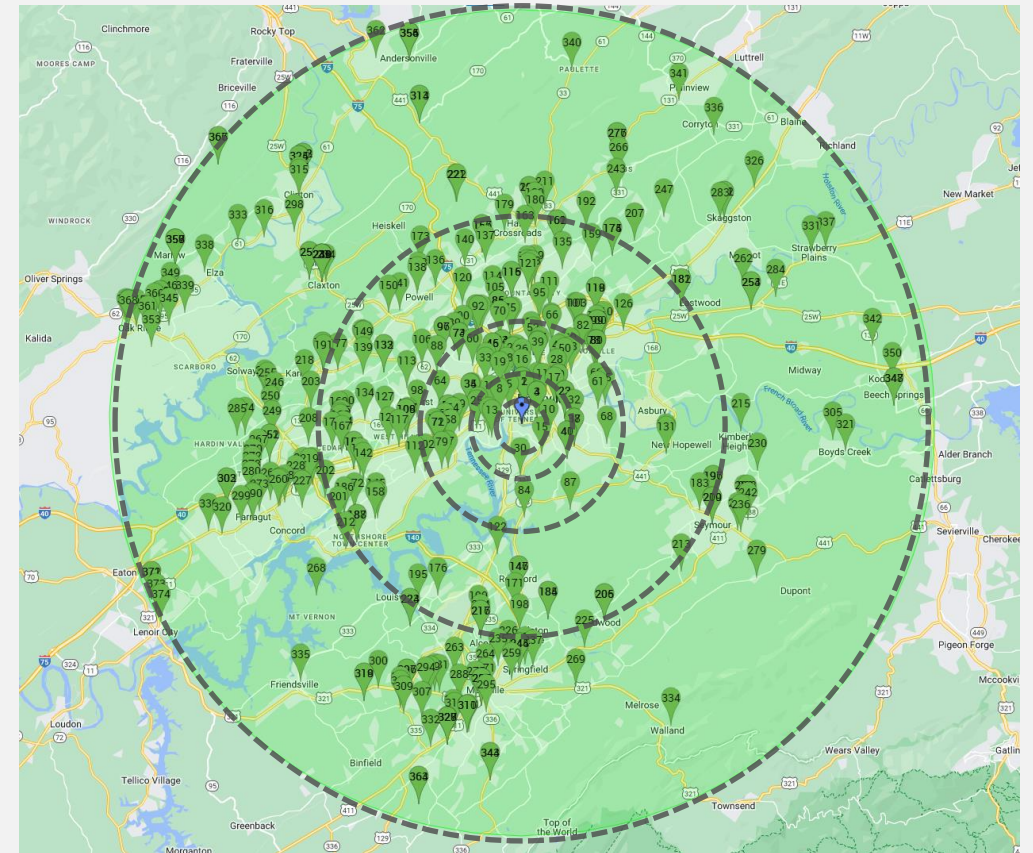
- › Be **NAEYC or equivalently accredited** facility that can **support at least 150 children (six weeks – five years old)**
- › Have a **mission & purpose separate from the Early Learning Center**, but offer **opportunities for synergies** with the Department of Child & Family Services
- › Serve as a **Recruitment & Retention tool**, particularly for Faculty.
- › Provide high quality childcare for **UTK Staff, Faculty, and Graduate Student Employees families**.
- › Operate competitively with **local market rates** and with **limited or no operational subsidy**. Differential “Sliding Scale” pricing strategies will be explored but are not required
- › Partner with **operator who can provide design, build, finance, operate, and maintain project delivery structure**.

Knoxville Childcare Market Overview

PARTNERSHIP OPPORTUNITY

Distance from UTK	Childcare Centers	Average Capacity
1-Mile	5	70
2-Miles	16	72
5-Miles	63	78
10-Miles	121	90
20-Miles	198	93

Serving **9 counties** with a **total population of 900,000 people**, and **48,000 of childcare age**



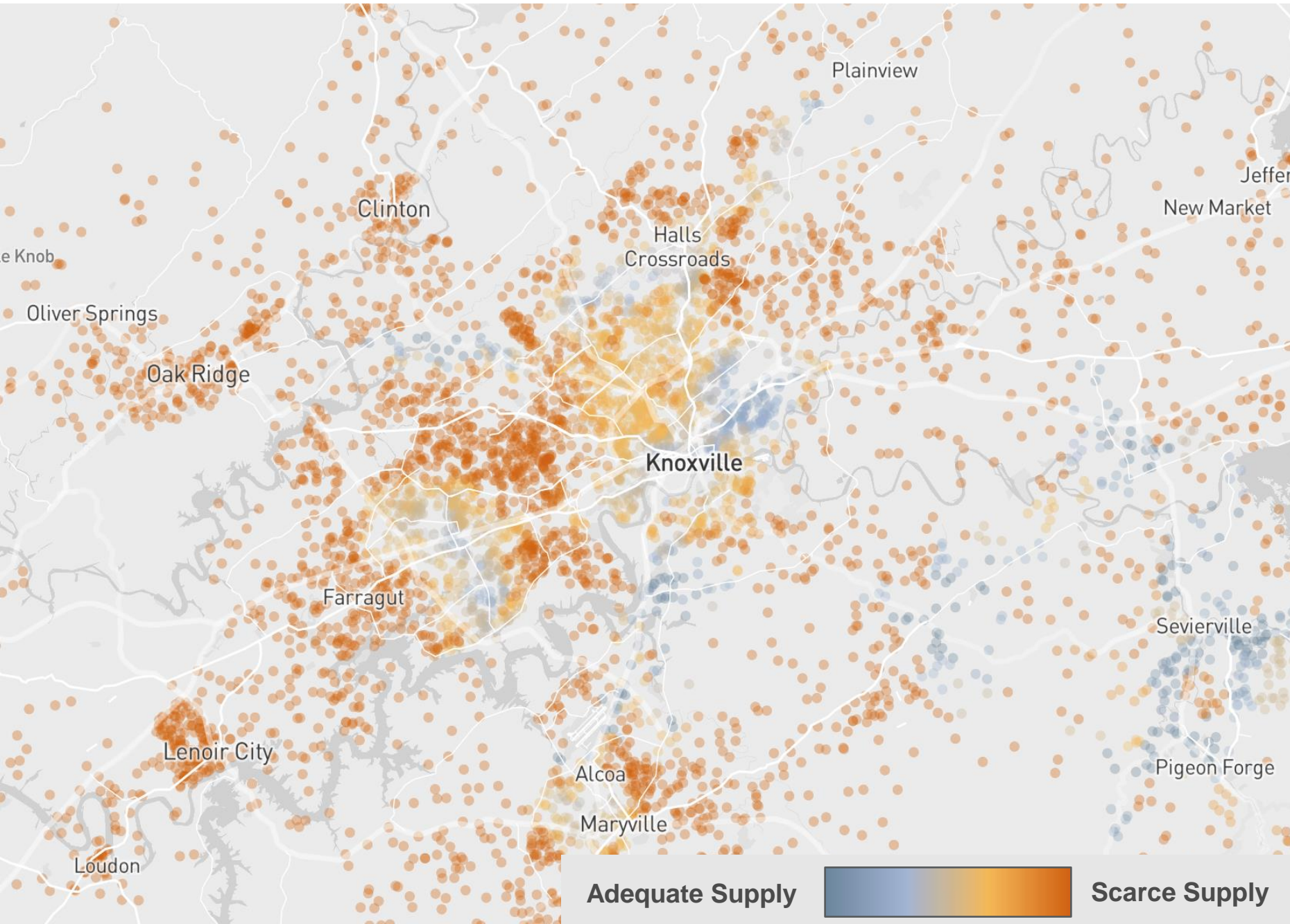
Estimated Capacity of all Childcare Centers: **18,414**
 Total Estimated Demand*: **28,472**

Tennessee Department of Human Services (February 2024)
 U.S. Census Bureau (July 2022)

*Estimated Demand based on national average of 59% of children under 5yo receiving nonparental care (NCES 2019)

Childcare Desert

PARTNERSHIP OPPORTUNITY



Based on the current Knoxville context, many residents are living in areas of high scarcity in the childcare market.

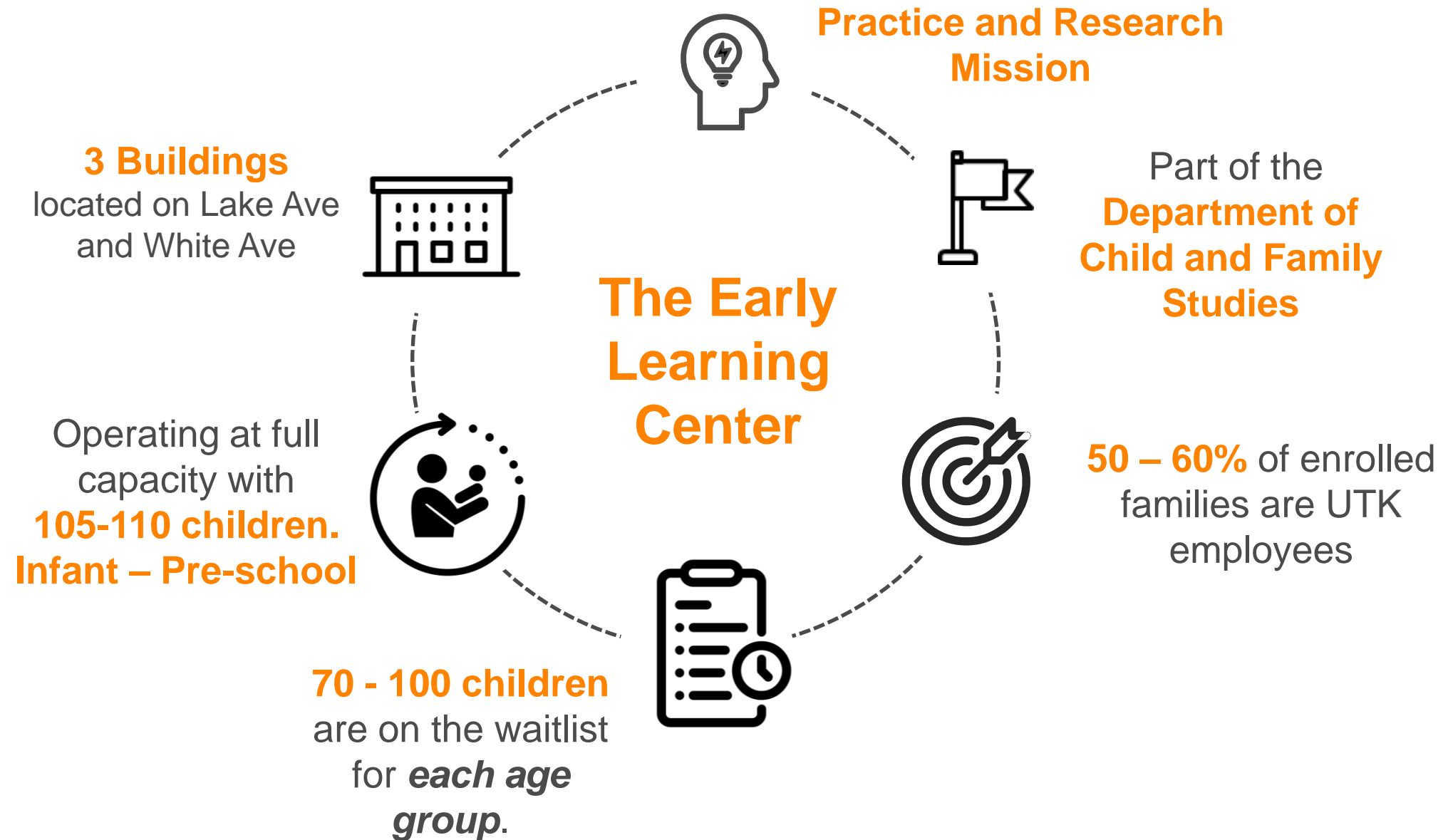
40% of Knoxville & Knox County residents are living in a 'daycare desert'.

Source: Center for American Progress: U.S. Child Care Deserts; childcaresdesert.org

***2 year wait lists
1 hour commute times***

The Early Learning Center

PARTNERSHIP OPPORTUNITY



Faculty & Staff Focus Groups – Key Takeaways

PARTNERSHIP OPPORTUNITY

“Interactive staff that is attentive and not on their phones, lots of green space, a reasonable schedule, access to windows, art, and a music program”

- › Minimum hours: **7:00am to 6:00pm**
- › **Provide Meals** (convenient for parents, some struggle with food insecurity)
- › **Summer Programming** (Staff work 12-months a year and many others stay local)
- › Systems like Tadpoles / Bright Spaces to monitor child and/or **receive updates**
- › **Good parking**, or at least a good system for drop-off
- › Curriculum focused on **experiential and sensory based learning**. (Social Constructivism)
- › **Safe space** in facility for students with disabilities
- › **Security & safety** systems
- › Other requested services: **Medical provider access, early child intervention, community events, alternative academic work, state childcare voucher acceptance**

DBFOM

PARTNERSHIP OPPORTUNITY



DESIGN

- Accommodate at least 150 children infant to pre-kindergarten age
- Achieve highest state-star quality and/or accreditation facility design and programming standards



BUILD

- Close proximity to University
- New development on greenfield site
- Existing vacant childcare facility
- Renovation of existing building



FINANCE

- Leverage creative financing solutions
- Off balance sheet
- Neutral credit impact



OPERATE

- Achieve Highest Tennessee Star-Quality rating
- Be accredited by reputable childcare accrediting agency
- Accept state childcare vouchers & certificates
- Provide special needs support and accommodations
- Groundlease /operating agreement



MAINTAIN

- Promptly repair equipment and/or facilities
- Comply with local, state and federal health and safety regulations
- Acquire, maintain and submit proof of compliance with local, state, and federal, fire, zoning, health and safety regulations

RFI Process / Key Dates

EVENT	DATE	TIME
University RFI Issuance	May 22, 2024	
Informational Conference	May 30, 2024	3:00 pm ET
Comments Deadline	June 12, 2024	
University Responds to Comments	June 18, 2024	
Notice of Intent to Respond Deadline	June 18, 2024	5:00 pm ET
RFI Response Deadline (Must be submitted to the University no later than the date and time shown)	June 25, 2024	12:00 pm ET

Q&A.

